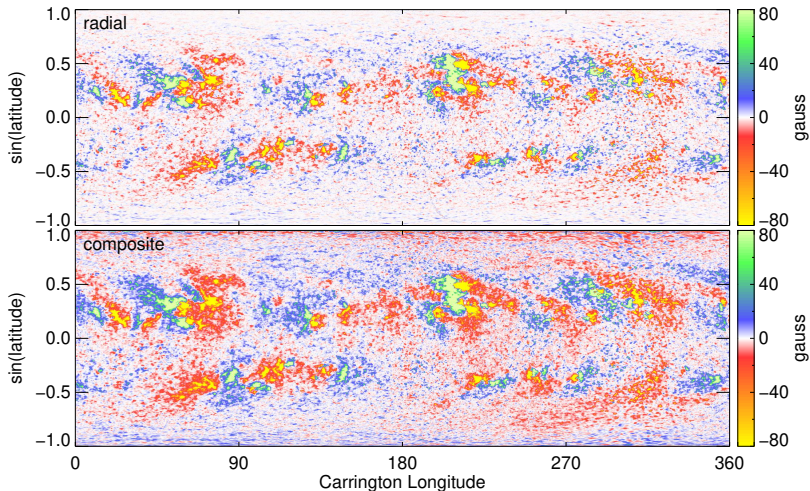
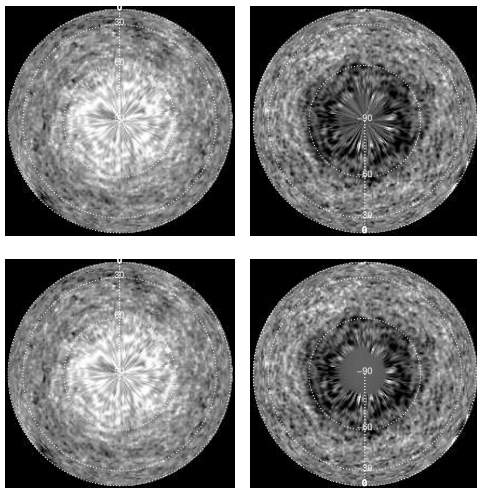


# Composite Maps: SOLIS/VSM CR 2119



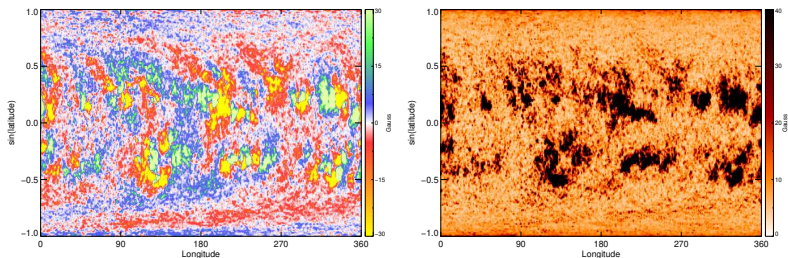
Comparison between radial (top) and composite synoptic charts (bottom). Note the enhanced weak magnetic field in the composite chart.

# Polar Views: SDO/HMI CR 2209 - Radial Component



Top row: Polar view of the Northern (left) and Southern (right) hemispheres using SSA to fill the poles. Bottom row: Same, but using surface fitting.

# Uncertainty Maps: SOLIS/VSM CR 2137



Photospheric magnetic flux density distribution (left) and corresponding uncertainty map (right). Both charts were computed using Fe I 630.15 nm SOLIS/VSM full disk magnetic observations, following the procedure described in Bertello et al. 2014 (Solar Phys. 289, 2419). The left image has been scaled between  $\pm 30$  gauss to better show the distribution of the weak magnetic flux density field across the map. The actual flux density distribution, however, covers a much larger range of field values - up to several hundred gauss.