

Role of CCMC in the NSW: data provider perspective

Alexei A. Pevtsov

US National Solar Observatory



“Breaking news: Monstrous CME hits the Earth”

NSW STRATEGY: High-level goals

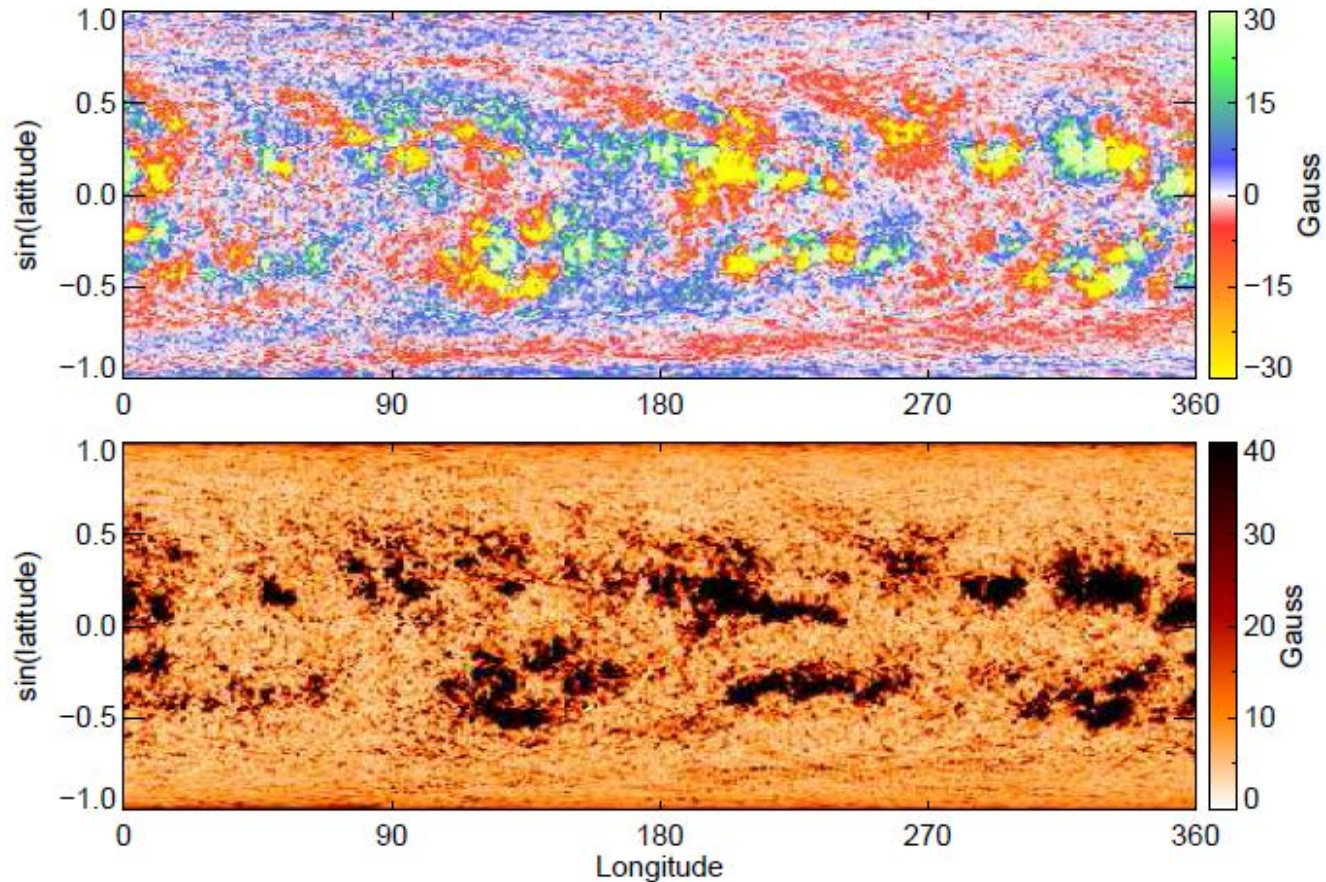
1. Establish Benchmarks for Space-Weather Events
2. Enhance Response and Recovery Capabilities
3. Improve Protection and Mitigation Efforts
4. Improve Assessment, Modeling, and Prediction of Impacts on Critical Infrastructure
5. Improve Space-Weather Services through Advancing Understanding and Forecasting
6. Increase International Cooperation

CCMC as a bridge between modelers and data providers

- Work with community on identifying shortcomings of existing data and developing new data products to improve SW forecast
- Provide opportunities for testing ideas developed by the community; testbed for “what if” scenarios (e.g., L5 mission).
- Promote development of international collaboration on incorporating new data

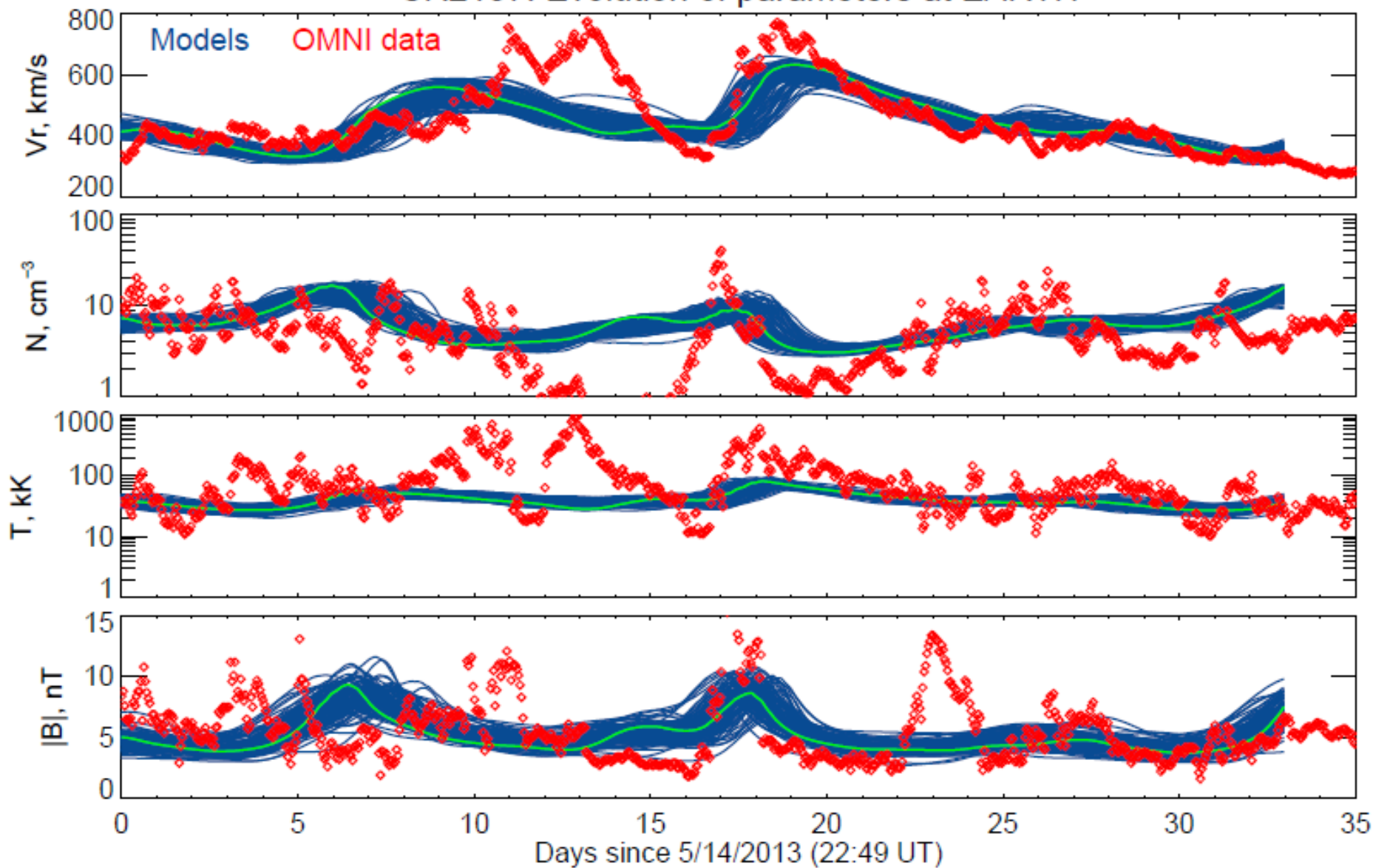
EX1: CCMC as testbed for new ideas

Past: “Error-free” treatment of synoptic maps



CR2137

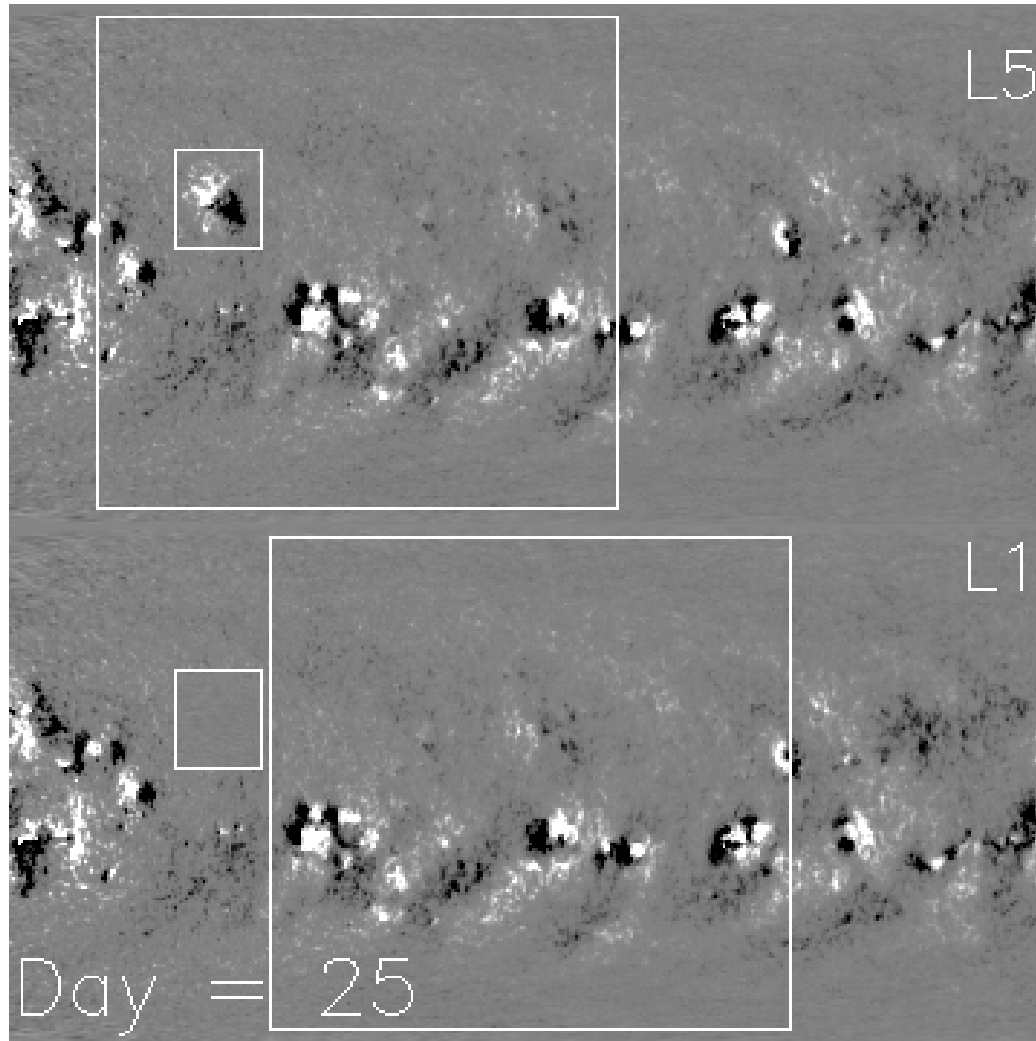
CR2137: Evolution of parameters at EARTH

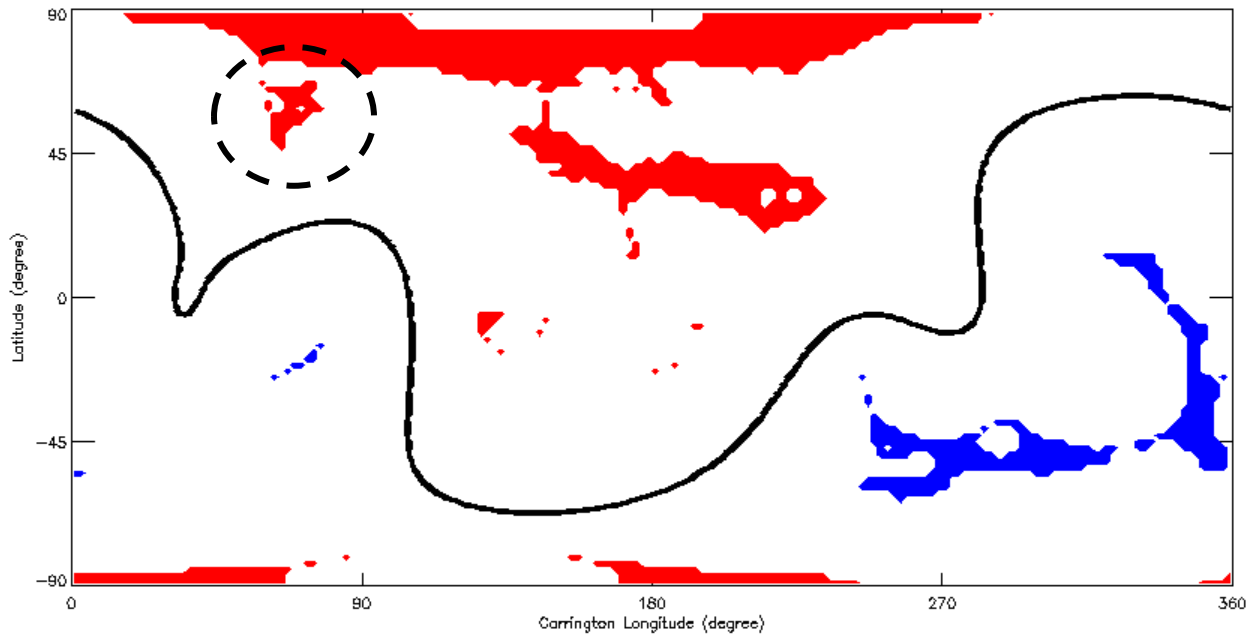


Pevtsov, A.A., Bertello, L., MacNeice, P. (2015)

DOI: [10.1016/j.asr.2015.05.043](https://doi.org/10.1016/j.asr.2015.05.043)

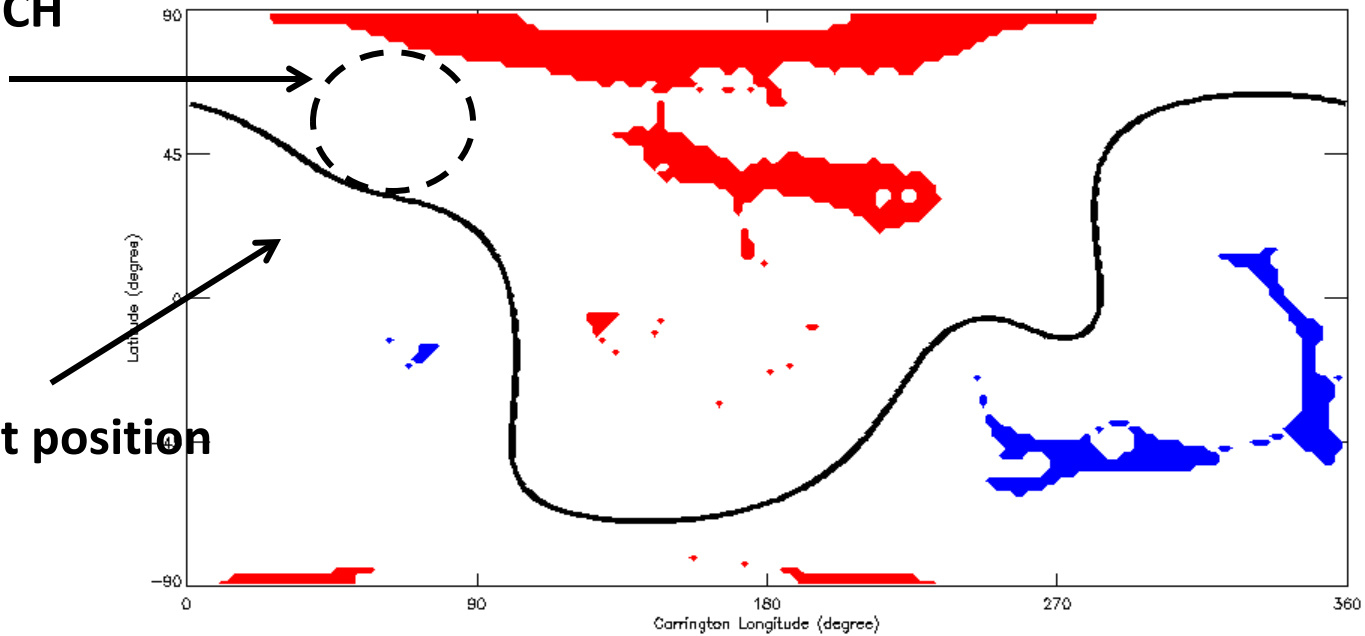
EX2: “What if” we had a magnetograph at L5 scenario





+L5

Missing CH



L1

Incorrect position
of NL

Data from International partners?



INTERNATIONAL
ASTRONOMICAL
UNION

[Home](#) | [About IAU](#) | [Member Directory](#) | [Site Map](#) | [Contact Us](#) | [Login](#)

[News](#)

[Science](#)

[Publications](#)

[Administration](#)

[Education](#)

[IAU for the
Public](#)

[Home](#) / [Science](#) / [Scientific Bodies](#) / [Working Groups](#) » [Inter-Division B-E WG Coordination of Synoptic Observations of the Sun](#)

Inter-Division B-E WG Coordination of Synoptic Observations of the Sun

Description

The mission of this working group is to facilitate international collaboration in synoptic long-term solar observations, which includes past, current, and future synoptic programs, preservation, calibration, and access to synoptic solar data products. The working group provides a forum for discussion of all issues relevant to synoptic long-term observations of the Sun including (but not limited to) coordination between synoptic programs in different countries (both in respect to exchange of information and planning for future synoptic programs) and a proper calibration of historical data from different sources (e.g., sunspot drawings, CaK plage indices, magnetic field measurements etc).

[Group Web Page](#)

www.iau.org/science/scientific_bodies/working_groups/255

[Group Members \(49\)](#)

<http://www.nso.edu/IAU-Com12>

Data from International partners?

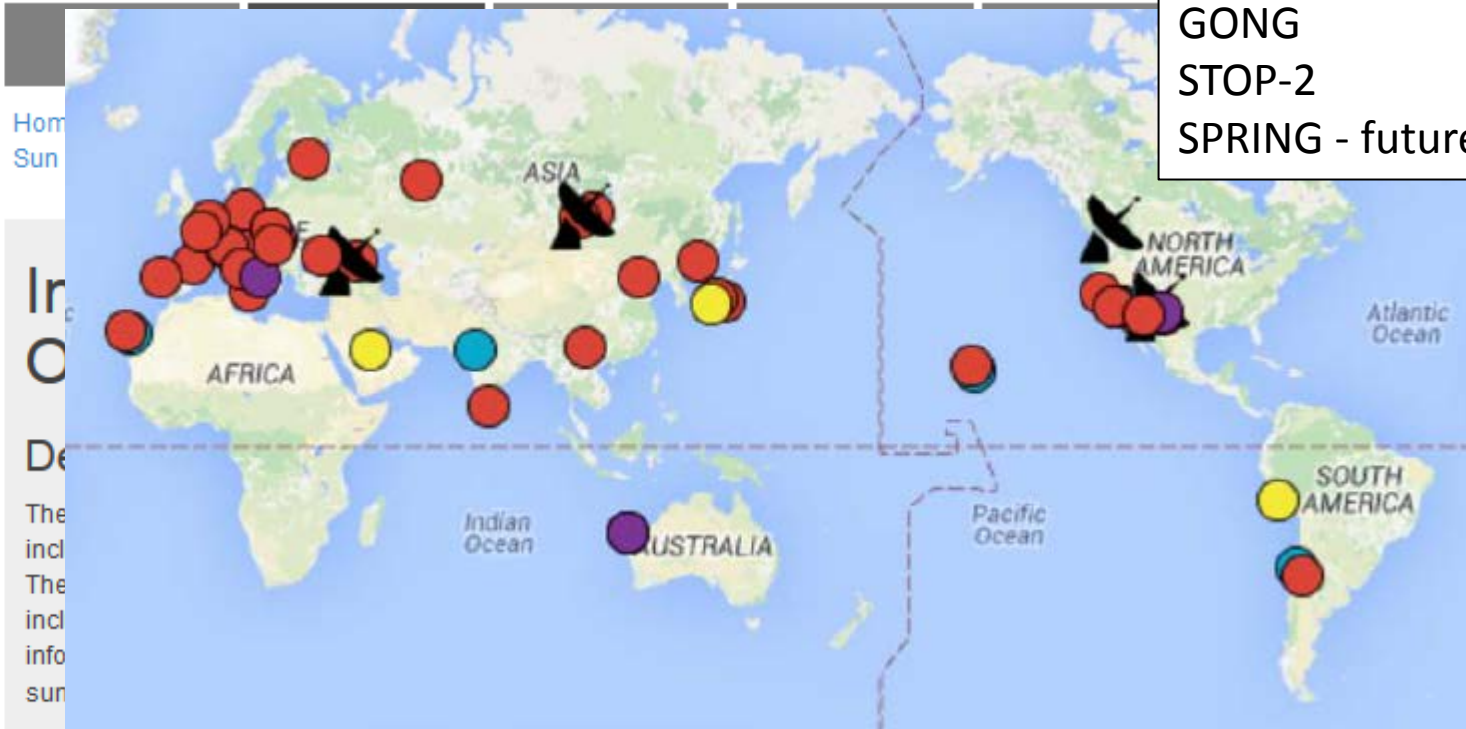


INTERNATIONAL
ASTRONOMICAL
UNION

[Home](#) | [About IAU](#) | [Member Directory](#) | [Site](#)

International Networks:

- GHN
- CHAIN
- GONG
- STOP-2
- SPRING - future



[Group Web Page](#)

www.iau.org/science/scientific_bodies/working_groups/255

[Group Members \(49\)](#)

<http://www.nso.edu/IAU-Com12>