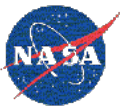


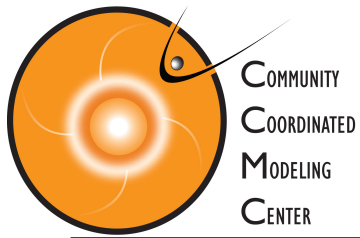
# Tools for Space Weather Forecasters Training

A. Pulkkinen

<http://ccmc.gsfc.nasa.gov>

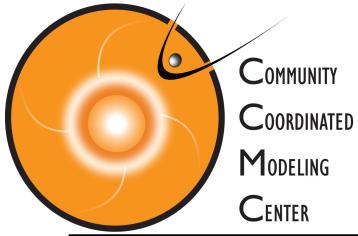
NASA Goddard Space Flight Center





# Contents

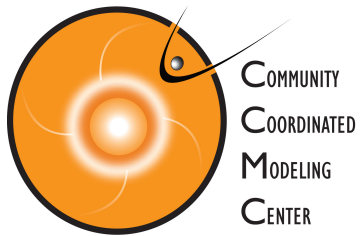
- CCMC runs-on-request system.
- Integrated Space Weather Analysis (iSWA) system.
- Library of online tutorials and other material.



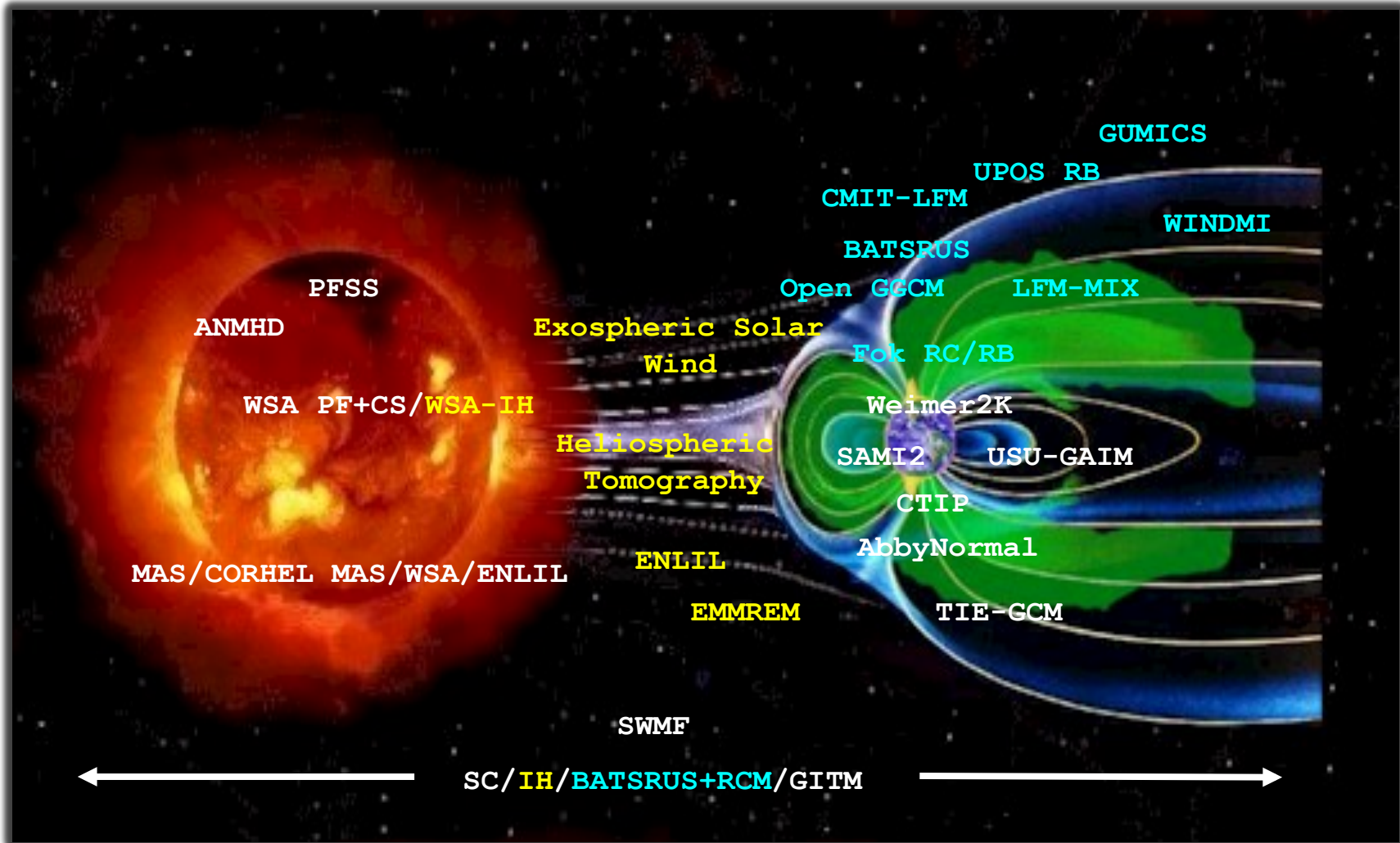
# CCMC runs-on-request system

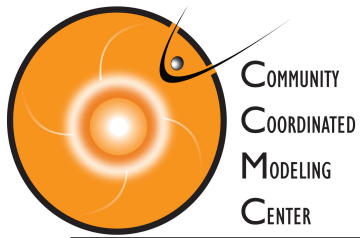
---

- The system is ideal for introducing new forecasters to a great collection of state-of-the-art space weather models:



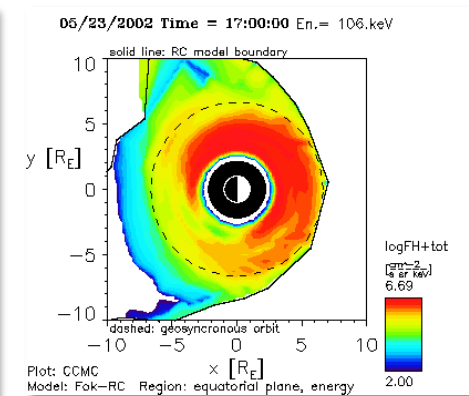
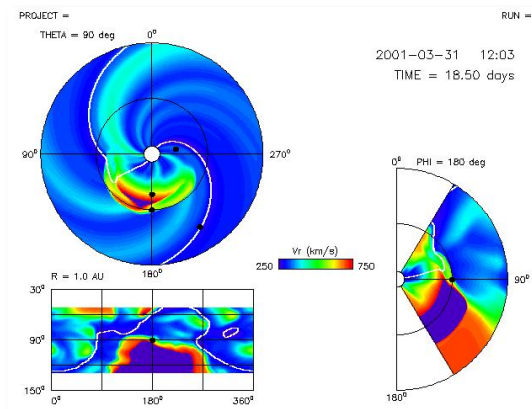
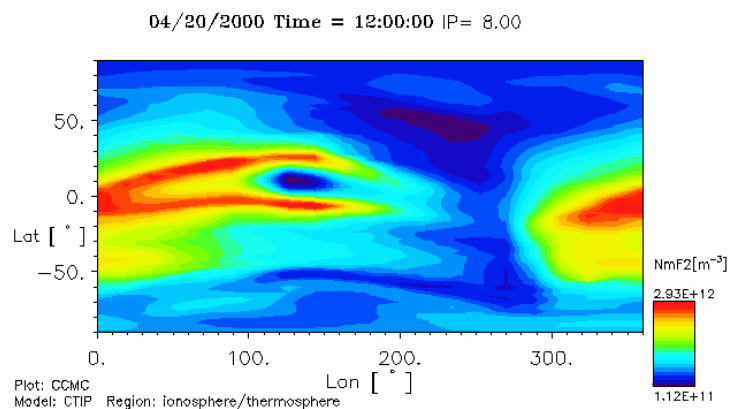
# CCMC runs-on-request system

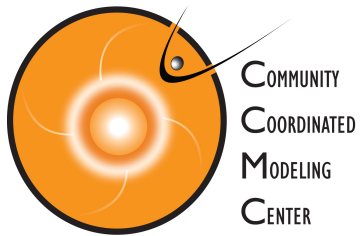




# CCMC runs-on-request system

- The system is ideal for introducing new forecasters to a great collection of state-of-the-art space weather models:
  - Hands-on illustration of model characteristics (domain, physical parameters etc).
  - Hands-on “sandbox” experimentation with the models. For example, launching CMEs into heliospheric models.



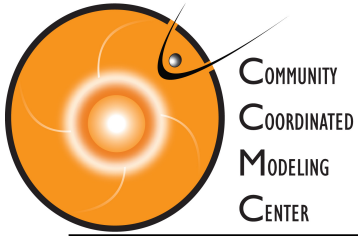


# iSWA

---

- iSWA's substantial collection of observational and model-based products transformative tool for forecaster training:
  - Tool for introducing space weather-relevant physical concepts (see online tutorials).
  - Forecaster training using real-time data flows. Immediate access to operational environment.
  - Forecaster training using historical events.

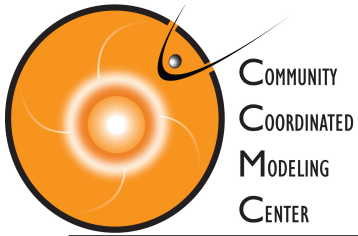
[[Case study](#) – 2011-08-03 15:30Z]



# Library of online educational material

---

- Educational material at [ccmc.gsfc.nasa.gov](http://ccmc.gsfc.nasa.gov).
- Online tutorials via [iSWA](#). (in collaboration with AFWA and CUA)



# Summary

---

- CCMC runs-on-request system.
- Integrated Space Weather Analysis (iSWA) system.
- Library of online tutorials and other material.

Let us know about your SWx forecaster training needs.